

NEWS RELEASE

February 22, 2022

FOR IMMEDIATE RELEASE

Contact: Myra Stoney, Health Director, director@swhealth.ne.gov, 308-345-4223

COVID-19 Update for Southwest Nebraska

- 42 cases of COVID-19 were recorded in Southwest Nebraska Public Health Department (SWNPHD) between February 14 - February 20, 2022. The weekly average of COVID tests conducted in the district fell by 42% in the last week compared to the previous month. 6% of all tests were positive in the last week, about half the positivity rate of the previous month in the previous month.
- Ten additional deaths due to COVID-19 were reported to SWNPHD from the end of December 2021 to mid-February 2022, bringing the total number of deaths to 102.
- 50% of Furnas county's total population has received the minimum recommended COVID vaccination dose. Low vaccination rates and slow uptake rates are cause for concern especially among younger residents of Hayes, Hitchcock, and Dundy counties.

Weekly report Feb 14 – Feb 20, 2022

Overview

The weekly report will look at COVID-19 cases in SWNPHD across different time periods, presenting graphs showing daily progress of cases and a weekly summary in conclusion

- The first table describes total COVID positive cases detected from **Feb 14 – Feb 20** (1 week) and **Jan 24 – Feb 20** (4 weeks) in Chase, Dundy, Hayes, Hitchcock, Frontier, Furnas, Keith, Perkins, and Red Willow counties. Positive results are described as weekly and monthly **COVID cases/10,000 population**.
- The second table describes all COVID tests conducted in SWNPHD from **Feb 14 – Feb 20** (1 week) and **Jan 24 – Feb 20** (4 weeks). We describe **total tests, positive cases and test positivity rate** by age and gender.
- The third table shows the **proportion of persons fully vaccinated** in SWNPHD. We define “fully vaccinated” as the proportion of persons who have received the minimum recommended dose (2 for Pfizer & Moderna; 1 for Janssen vaccines). Data is described by **county and age** category. Data current as of **Feb 20, 2022**.
- The first graph looks at the weekly progress of the pandemic from **April 1, 2020 – Feb 20, 2022**, across all 9 counties in SWNPHD. We describe the **daily COVID positive case rate (7-day rolling average¹)** across SWNPHD.
- The second graph describes the **average daily case rate (7-day rolling) by age**, dividing the population by **10-year age categories**.
- The third set of graphs describe the **average daily case rate (7-day rolling) April 1, 2020 – Feb 20, 2022**, in each of the 9 counties in SWNPHD, described as **per 10,000 residents**.

¹ 7-day rolling average refers to the sum of the cases reported on that day and the preceding 6 days divided by 7. This number is presented for each day to ‘smooth out’ the line for cases.

The table below describes COVID positives/10,000 population and the positivity rate for the **past week (Feb 14 – Feb 20, 2022) & the past 4 weeks (Jan 24 – Feb 20, 2022)**

	Total Population	Feb 14 – Feb 20 (1 week)		Jan 24 – Feb 20 (4 weeks).	
		Positive cases/10,000 population	Test Positivity rate	Positive cases/10,000 population	Test Positivity rate
Chase	3,734	5.4	5.7%	93.7	8.8%
Dundy	2,023	0.0	0.0%	79.1	2.9%
Frontier	2,609	7.7	8.7%	138.0	17.4%
Furnas	4,786	29.3	16.3%	257.0	24.8%
Hayes	943	0.0	0.0%	42.4	10.5%
Hitchcock	2,843	17.6	11.6%	137.2	8.5%
Keith	8,099	11.1	7.5%	174.1	16.2%
Perkins	2,907	3.4	3.4%	117.0	10.9%
Red Willow	10,806	8.3	3.9%	120.3	10.4%
TOTAL	38,750	10.8	6.3%	144.0	12.2%

The table below describes COVID tests conducted, positives and the positivity rate by age and gender for the **past week (Feb 14 – Feb 20, 2022) & the past 4 weeks (Jan 24 – Feb 20, 2022)**

Age (in yrs)	Feb 14 – Feb 20 (1 week)			Jan 24 – Feb 20 (4 weeks).		
	Total Population	Positive cases	Test Positivity rate	Total Population	Positive cases	Test Positivity rate
0-17	47	3	6.4%	331	70	21.1%
18-29	98	9	9.2%	643	85	13.2%
30-39	63	3	4.8%	465	64	13.8%
40-49	99	11	11.1%	586	73	12.5%
50-59	103	5	4.9%	694	87	12.5%
60-69	80	3	3.8%	580	77	13.3%
70-79	70	3	4.3%	438	58	13.2%
80-89	107	5	4.7%	850	44	5.2%
Total	667	42	6.3%	4,587	558	12.2%
Gender						
Female	489	24	4.9%	3,293	316	9.6%
Male	172	16	9.3%	1,280	232	18.1%
Data missing/ not disclosed	6	2	0.0%	14	10	71.4%
Total	667	42	6.3%	4,587	558	12.2%

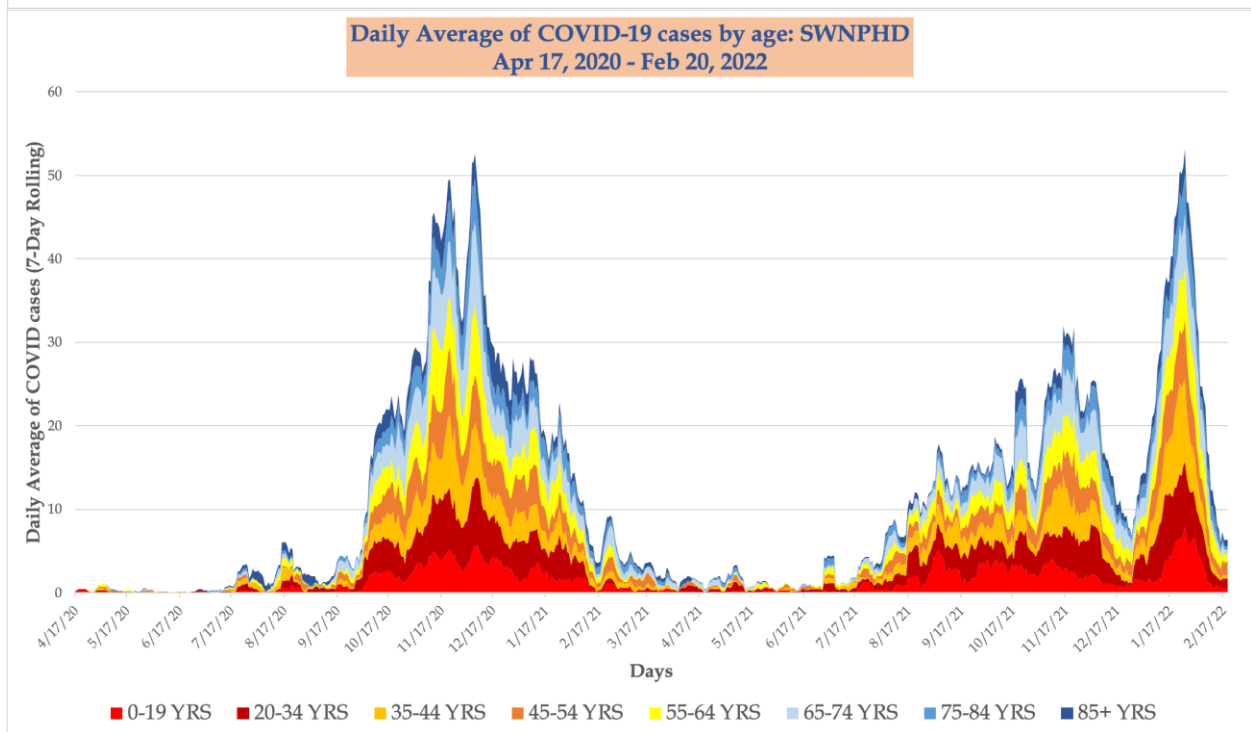
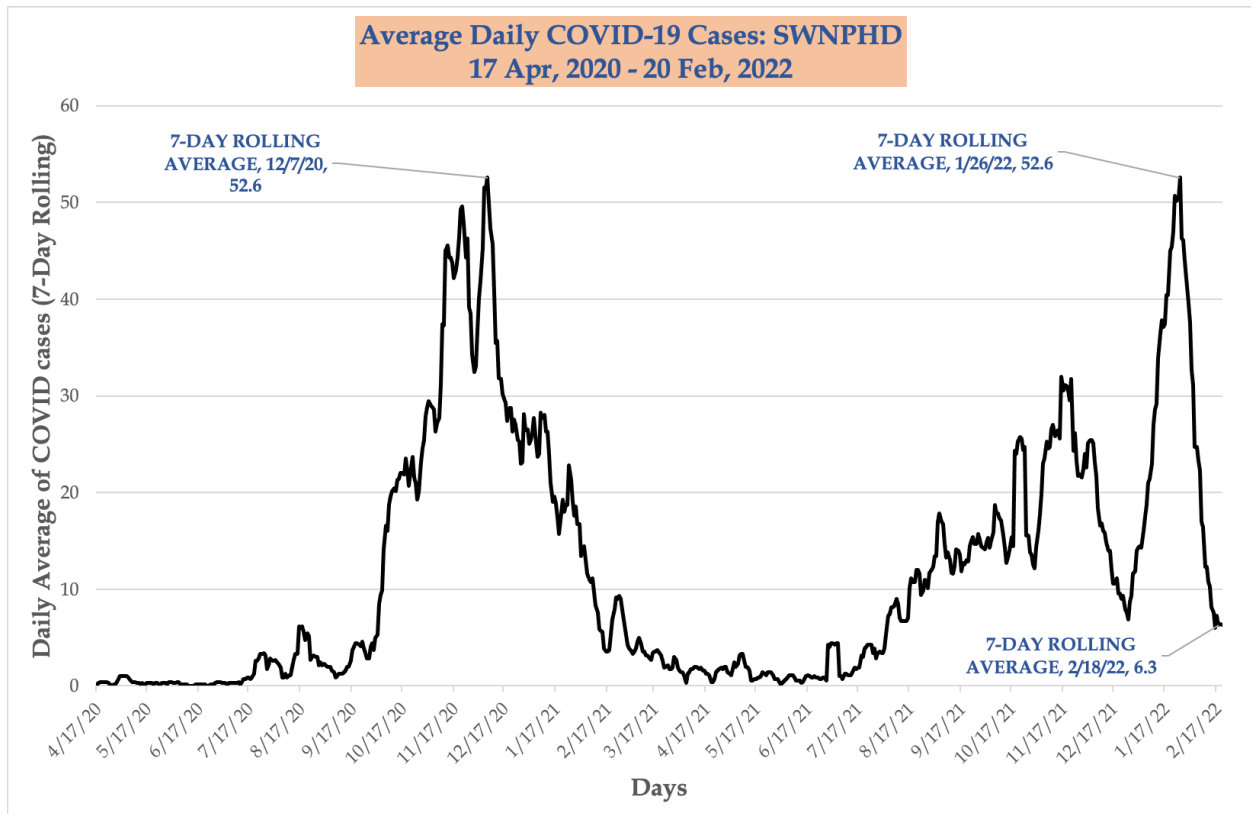
Details of vaccination rates by age in each of the nine counties in Southwest Nebraska Public Health Department is shown below. The legend for color codes used is also displayed. Percentages have been rounded off to the nearest whole number. Vaccines are currently available to all eligible residents aged 5 years and over.

Only 1st (Janssen) & 2nd doses (Moderna & Johnson & Johnson) have been considered, booster doses have not been counted to calculate “completely vaccinated” rate. Date spans the period from **15 Dec 2020 – 20 Feb, 2022.**

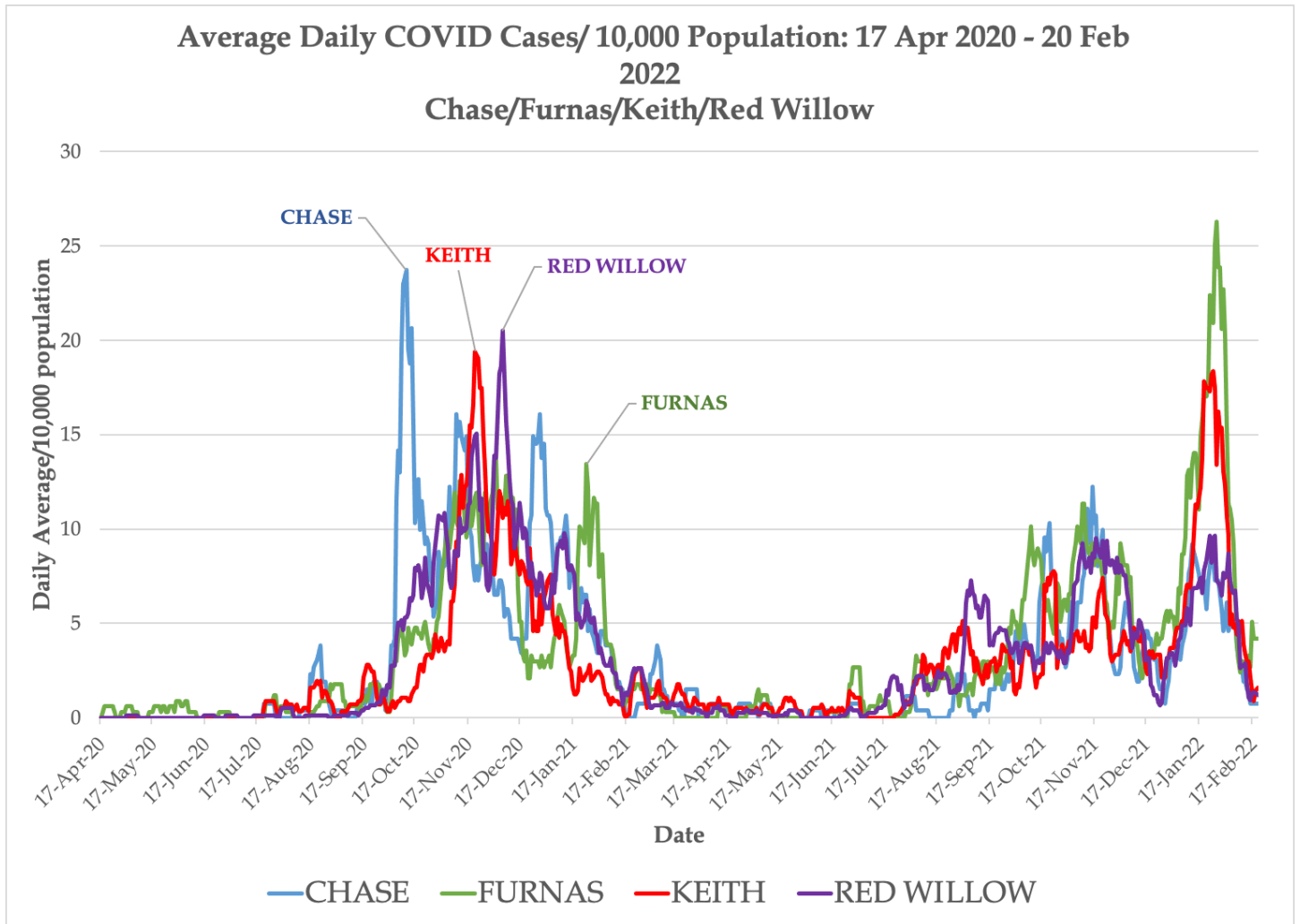
	0-19 YRS	20-34 YRS	35-44 YRS	45-54 YRS	55-64 YRS	65-74 YRS	75-84 YRS	85+ YRS	ALL AGES
Chase	11%	34%	38%	47%	49%	83%	74%	65%	43%
Dundy	7%	21%	22%	33%	41%	65%	100%	42%	30%
Frontier	6%	30%	35%	43%	50%	62%	54%	100%	37%
Furnas	15%	40%	48%	49%	60%	82%	92%	78%	50%
Hayes	8%	23%	31%	20%	30%	76%	48%	50%	29%
Hitchcock	6%	22%	34%	33%	46%	76%	51%	64%	35%
Keith	14%	36%	44%	43%	60%	64%	67%	85%	45%
Perkins	10%	30%	39%	45%	52%	72%	81%	56%	40%
Red Willow	10%	34%	45%	43%	59%	93%	68%	87%	43%
SWNPHD	11%	33%	41%	43%	55%	76%	69%	75%	42%

0% - 24%	Less than 1/4th received 1 or 2 dose as recommended
25% - 49%	1/4ths to 1/2 received 1 or 2 dose as recommended
50%- 74%	1/2 to 3/4ths received 1 or 2 dose as recommended
75% & higher	Over 3/4ths received 1 or 2 dose as recommended

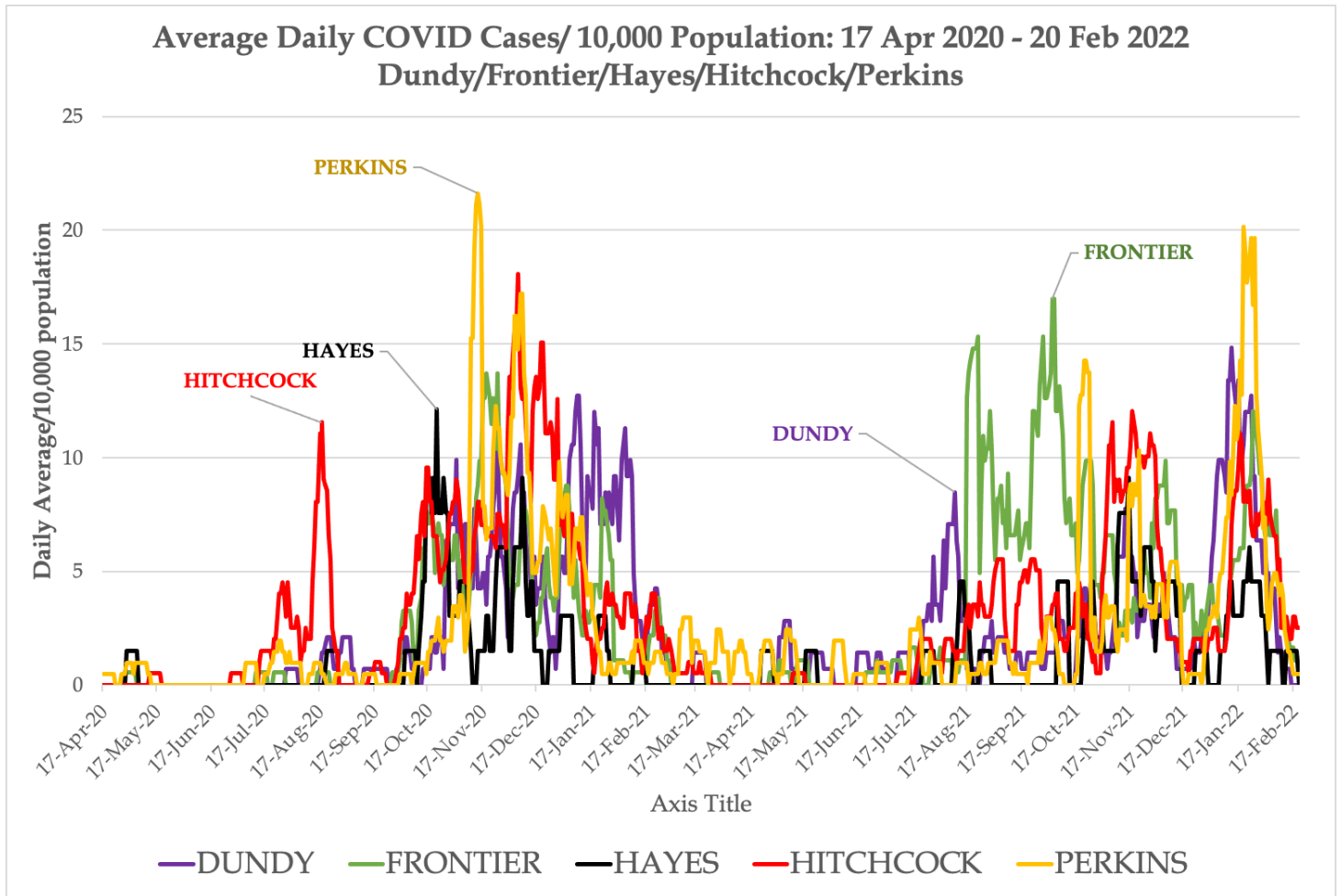
- The first graph below describes the **average daily number of new cases** across all 9 counties of Southwest Nebraska Public Health Department from 5 May 2020 – 20 February 2022. Daily average is depicted by the 7-day rolling average of cases. The second graph describes the daily average of cases by age. The width of the graph represents the average number of new COVID cases for the previous 7-days, and the individual colors describe the ages.
- In general, blue = 65+ years, Yellow & Orange = 35-64 year olds, Red = Less than 35 year olds.



- The graph below describes the **average daily number of new cases/ 10,000 population in Chase, Keith, Red Willow and Furnas counties** from 5 May 2020 – 20 February 2022. The height of the graph corresponds to the average number of new COVID cases proportional to the population of the county.



- The graph below describes the **average daily number of new cases/ 10,000 population in Hitchcock, Hayes, Perkins, Dundy, and Frontier counties** from 5 May 2020 – 20 February 2022. The height of the graph corresponds to the average number of new COVID cases proportional to the population of the county.



SWNPHD is located at 404 West 10th St (1 block north of Arby's) in McCook and can be reached by calling 308-345-4223. The website www.swhealth.ne.gov contains many resources and additional information helpful to prevent disease, promote and protect health. You can also follow SWNPHD on Facebook and Instagram. SWNPHD serves Chase, Dundy, Frontier, Furnas, Hayes, Hitchcock, Keith, Perkins, and Red Willow counties.

###